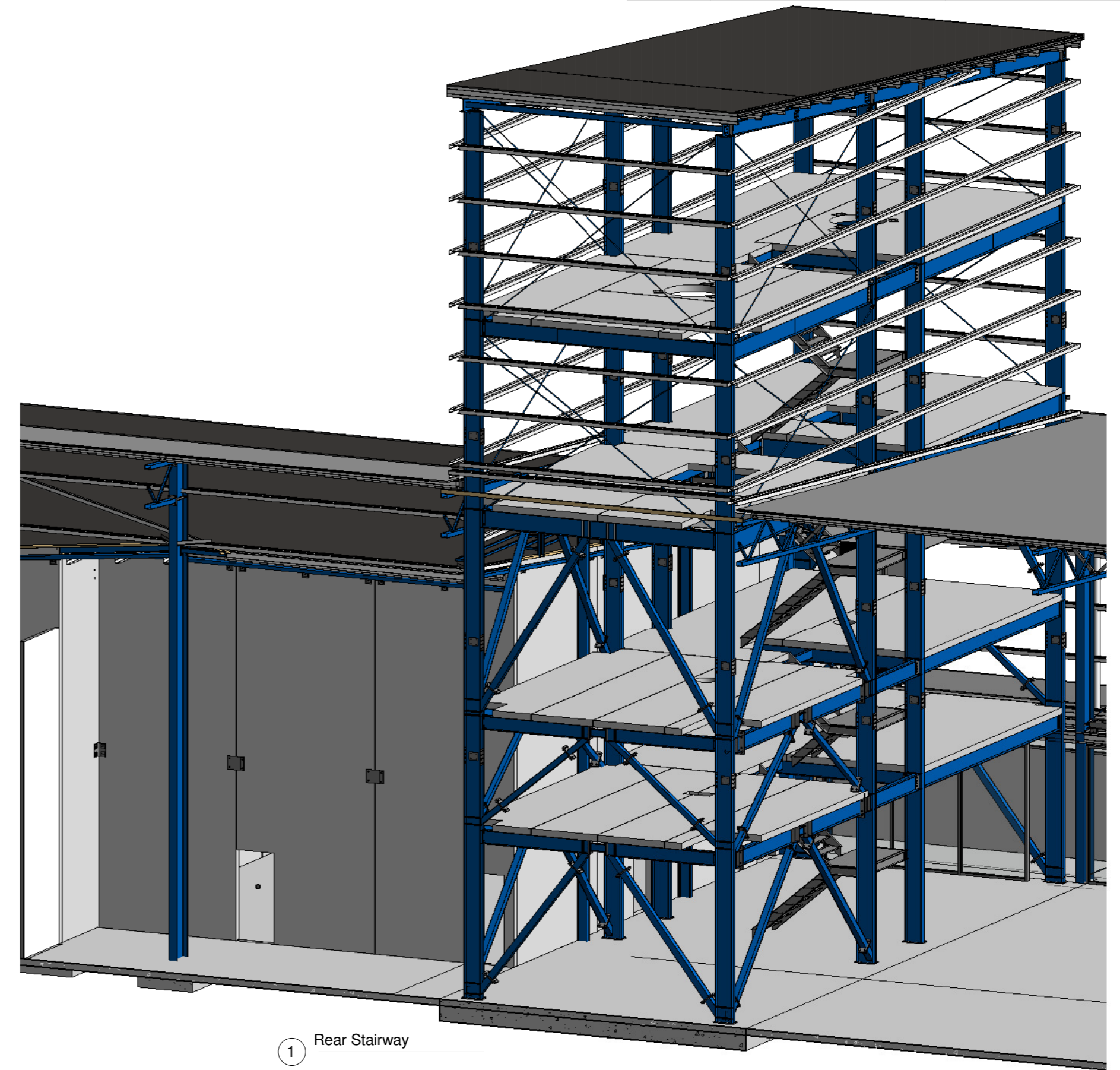
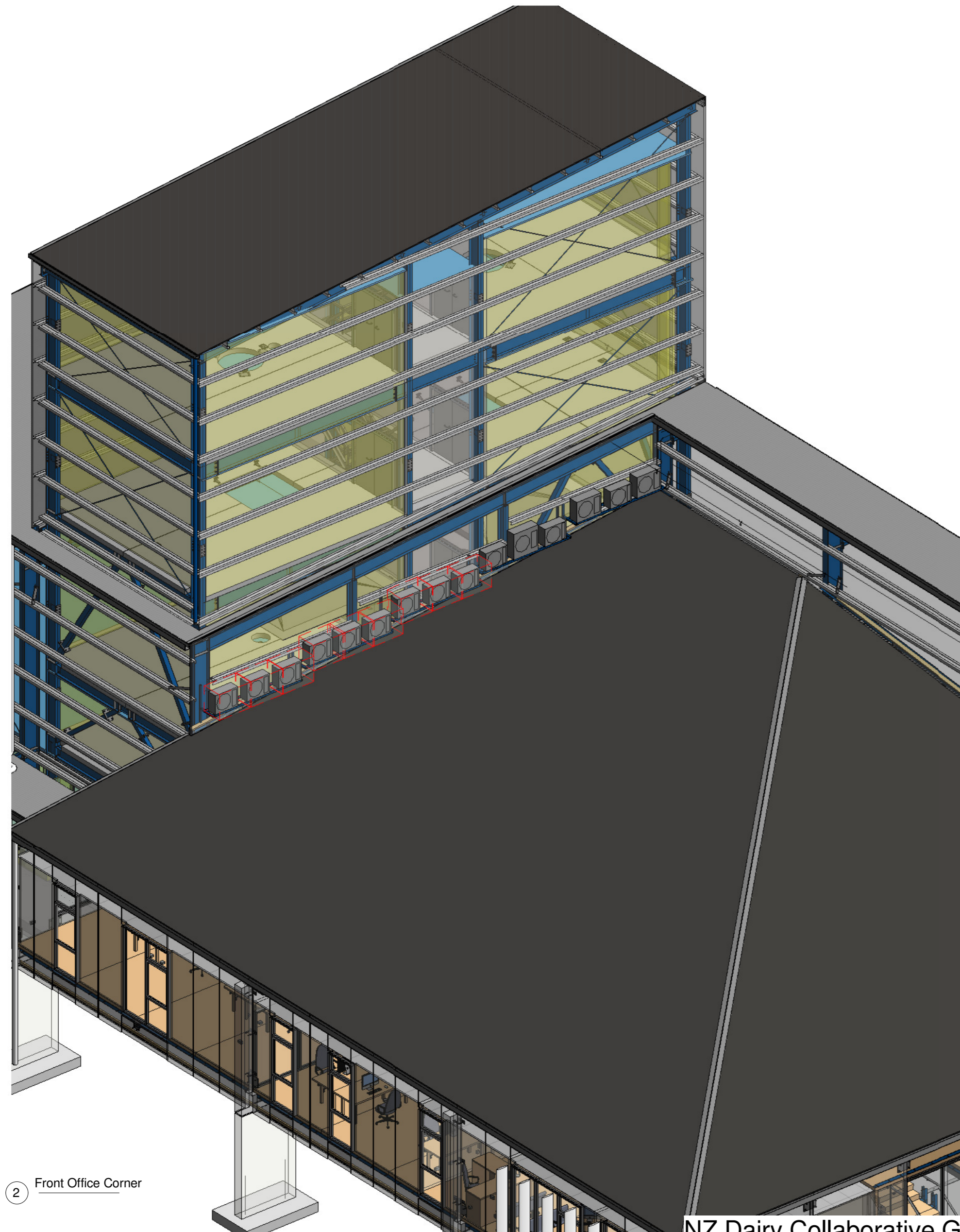


Arch Sheet List			
Sheet Number	Sheet Name	Current Revision	Current Revision Date
A0100	Site		
A0200	Fit Out Ground Floor Plan		
A0201	Fitout Groundfloor Plan with Plant		
A0202	Level T1	2	21/11/16
A0203	Level T2, T3, T4		
A0300	Cross Sections and Stairs		
A0301	Cross Section BB		
A0302	Cross Section CC		
A0303	Cross Section GL6		
A0400	Elevations C		
A0401	Elevations B		
A0500	Plumbing Ground Floor	4	20/12/16
A0600	D W Ground Floor Plan		
A1300	Roof Plan		
A1301	Flashing Details	2	21/11/16



NZ Dairy Collaborative Group
Tower Extension
9 Ashford Ave, Ashburton

JOB # 12630
DATE: 27/10/16

SITE PLAN

PROJECT NAME: NZ Dairy Collaborative Group
 PROJECT DESCRIPTION: Infant Formula Blending Plant
 PROJECT ADDRESS: 9 Ashford Ave, Ashburton
 APPELLATION: Lot 17 DP 427688

AREA OF PROPOSED NEW BUILDINGS:
 Blending Plant = 4442m²
 Office = 1005m² (Separate Building Consent)

LANDSCAPING: 3m wide landscaping strip

KEY

	Data (Telephone)
	Power
	Water

Please refer to Civil and Services plan by TM Consultants for further information.

Read this plan in conjunction with the FPE Sprinkler design 2209 for Fire System, Fire water tank and pump house set out.



Site Plan New
1:500

THOMPSON
CONSTRUCTION & ENGINEERING

Thompson Engineering 2002 Ltd | PO Box 2081, Washdyke - Timaru | 9b Meadows Road - Timaru
 PH 0800 688 716 | F (03) 688 7168 | www.thompsonengineering.co.nz | design@thompsonengineering.co.nz

PROJECT

Arch

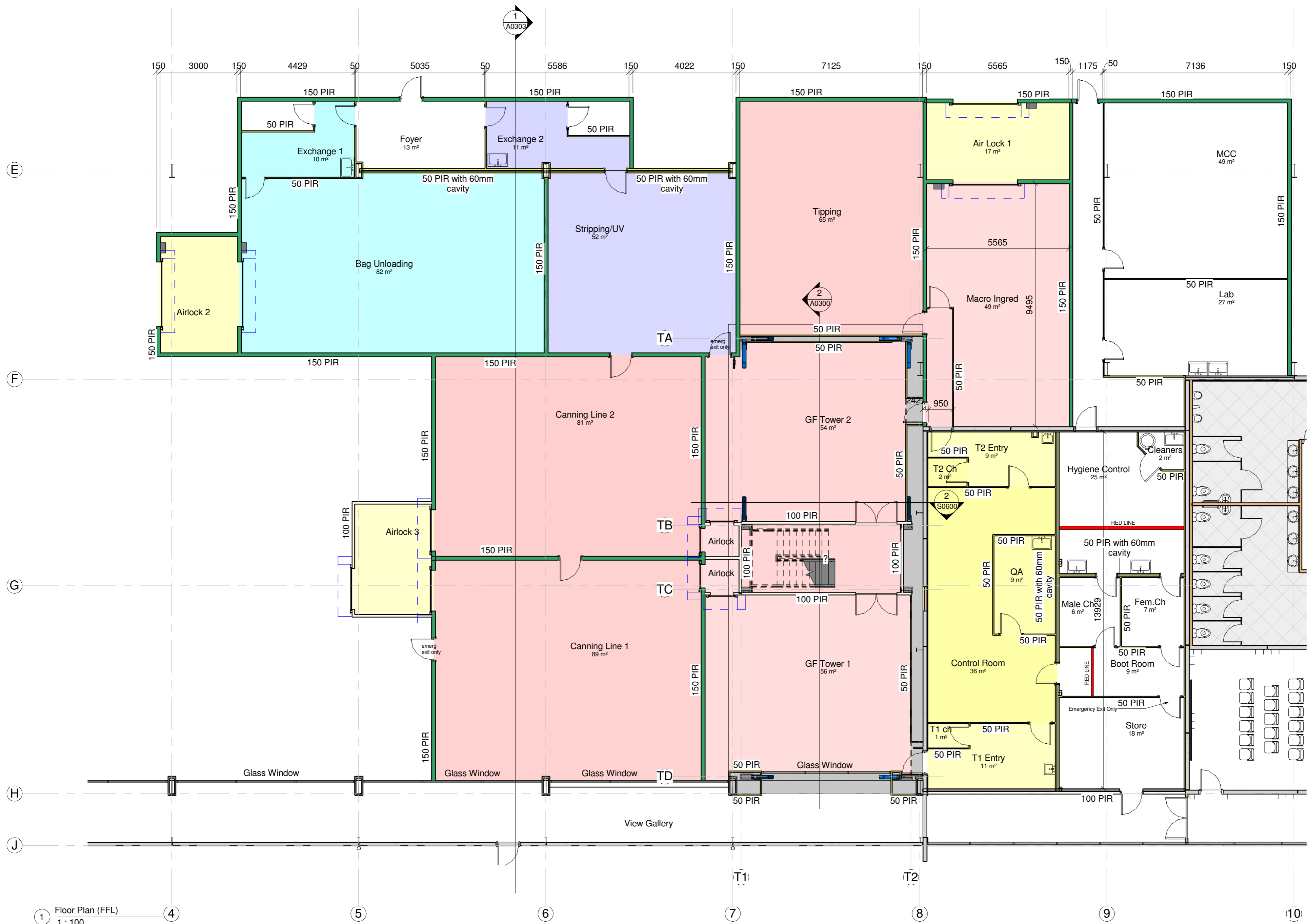
**NZ Dairy Collaborative Group
 Infant Formula Blending Plant**

9 Ashford Ave., Ashburton

All Drawings property of Thompson Engineering 2002 Ltd

Rev#	Amendments	Date
1	PIM Parking	18/12/15
7	Changes for sprinkler and electrical services	21/03/16
9	Changes to DP's	02/05/16
11	Prelim Tank and Pump House layout	15/06/16

SCALE	As indicated@ A2	JOB #	12412
DRAWN BY	B.Holloway	DATE	23/01/16
APPROVED BY	A. Cloake	REV	11
Site Plan		A0100	
Please note: All dimensions to be verified on site			
Paper size: A2			



1 Floor Plan (FFL)
1 : 100

PROJECT

NZ Dairy Collaborative Group
Tower Extension

9 Ashford Ave, Ashburton

All Drawings property of Thompson Engineering 2002 Ltd

Rev#

Amendments

Date

SCALE 1 : 100 @ A2

JOB # 12630

DRAWN BY B Holloway

DATE 27/10/16

CHECKED BY

REV

Fit Out Ground Floor Plan

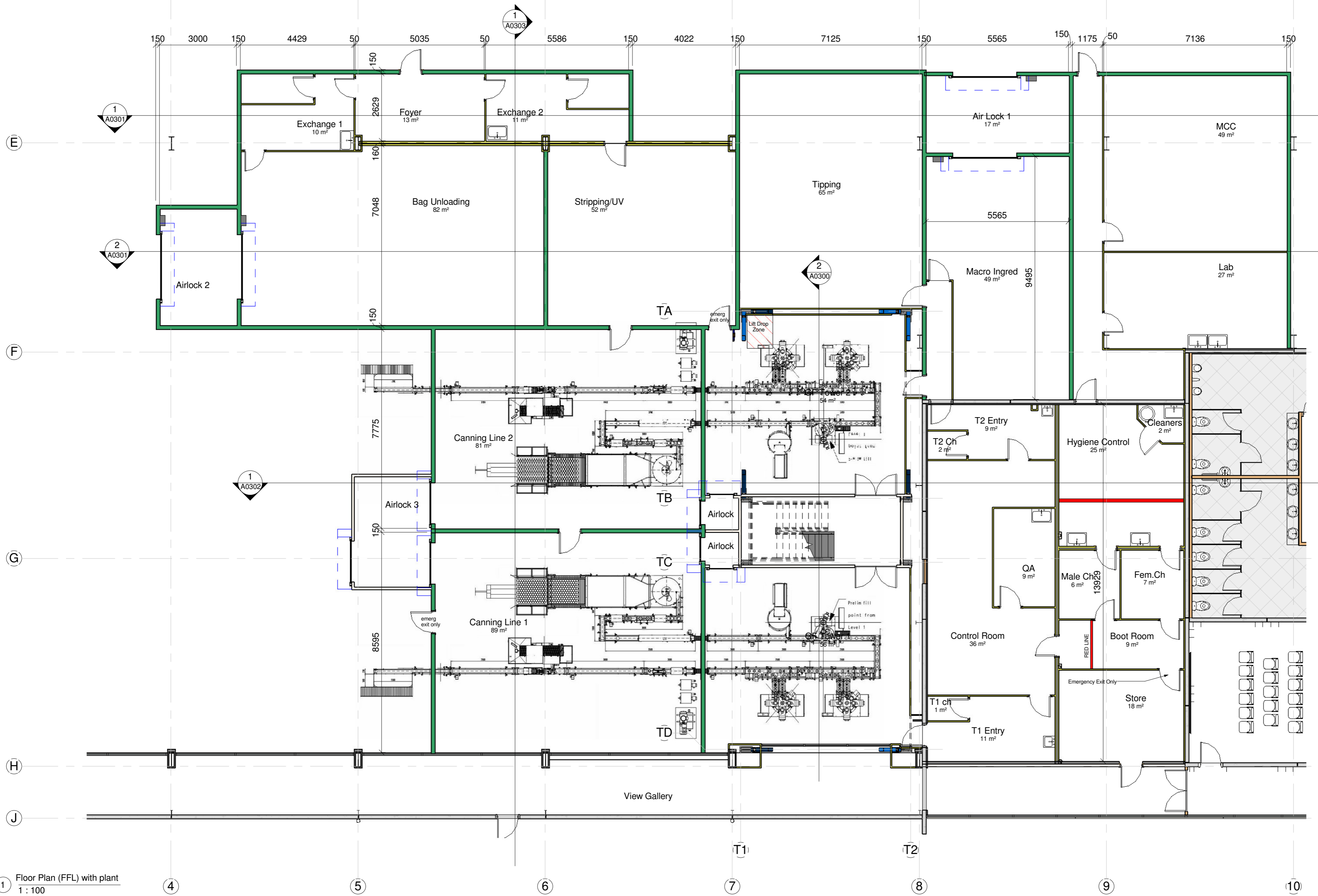
A0200

Please note: All dimensions to be verified on site

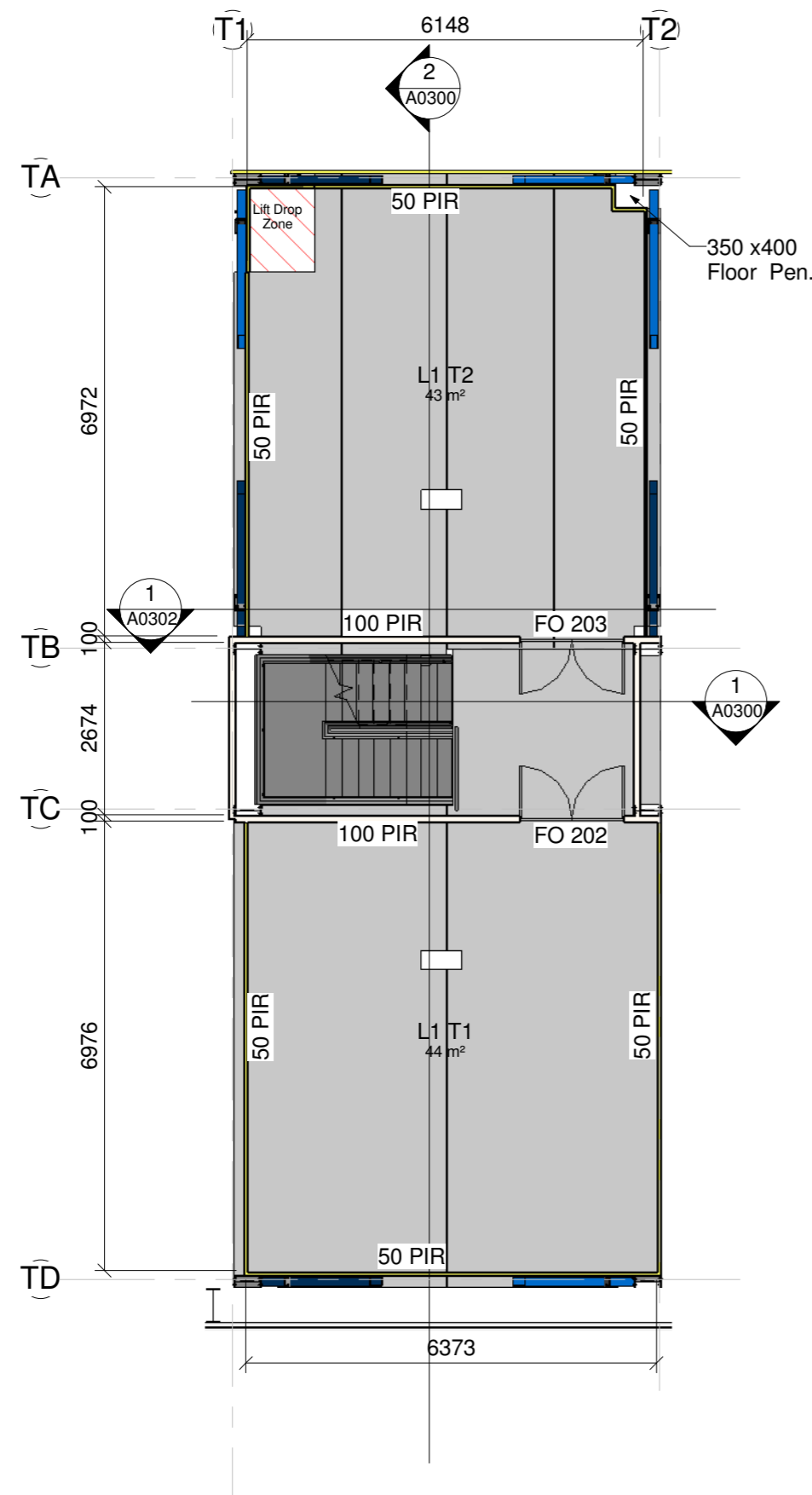
Paper size: A2



Thompson Engineering 2002 Ltd | PO Box 2081, Washdyke - Timaru | 9b Meadows Road - Timaru
PH 0800 688 716 | F (03) 688 7168 | www.thompsonengineering.co.nz | design@thompsonengineering.co.nz



1 Floor Plan (FFL) with plant
1 : 100



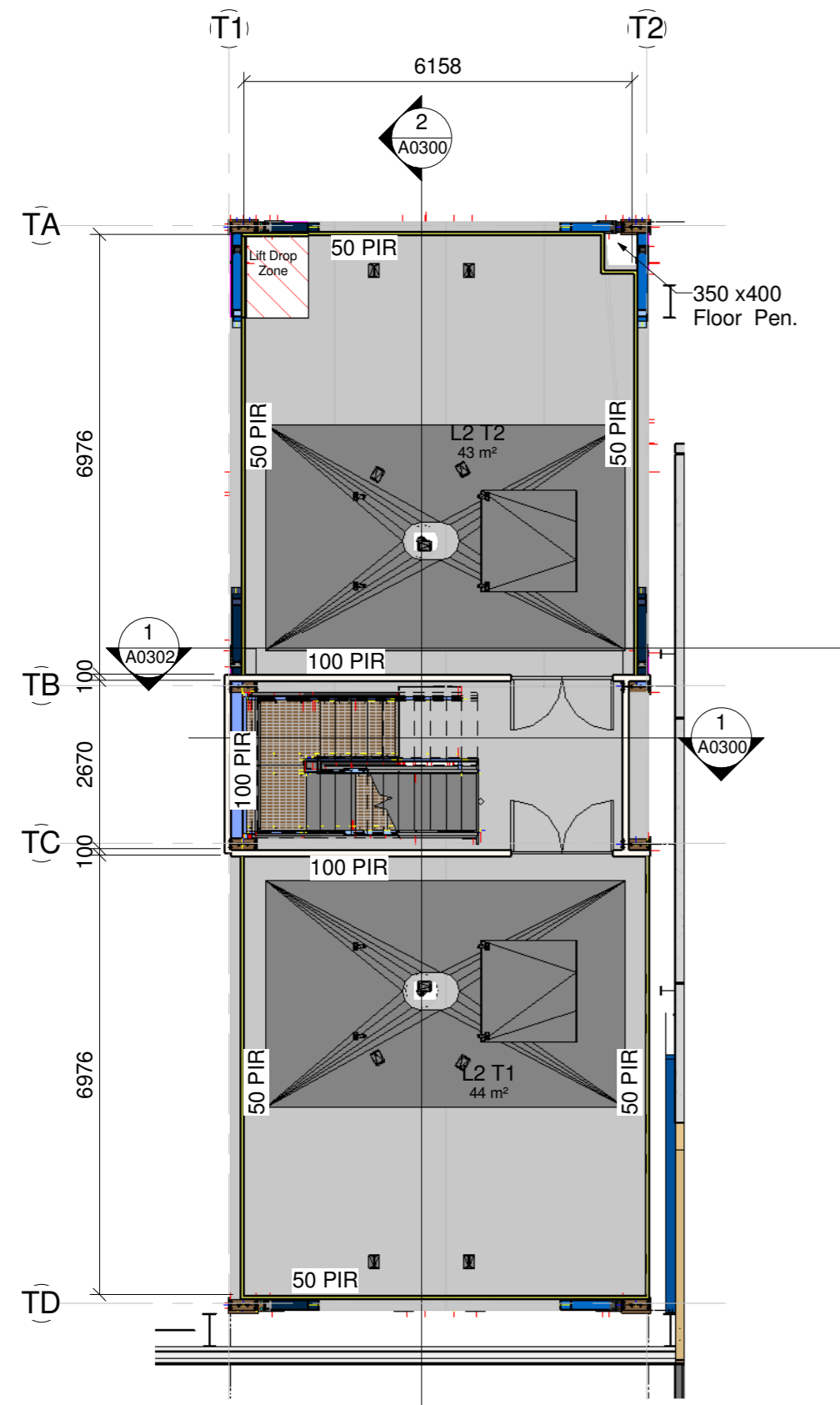
1 Level T1
1:100

Fresh Air Supply to comply with G4					
Room	Supplied Airflow (l/s)	Area (m ²)	Calc. Occupancy (NZS 4303 calc)	Supply Ratio	Flow reqd (L/S)
Bag Unloading	3332	82	8	10 L/s per person	65.6
Stripping/UV	5085	52	5	10 L/s per person	41.6
Bag Tipping	3775	65	7	10 L/s per person	52
Macro Ingrid	2809	49	5	10 L/s per person	39.2
Canning Line 2	6532	81	8	10 L/s per person	64.8
Canning Line 1	6532	89	9	10 L/s per person	71.2
Tower 2 (4 levels @ 54m ²)	7131	216	22	10 L/s per person	172.8
Tower 1 (4 levels @ 56m ²)	6713	224	22	10 L/s per person	179.2
Control Room & QA	55 min. *1	68	7	10 L/s per person	54.4
Hygiene Control and change rooms	128 min. *1	51	5	2.5L/s per m ²	127.5
Lab	22 min. *1	27	3 *2	10 L/s per person	30

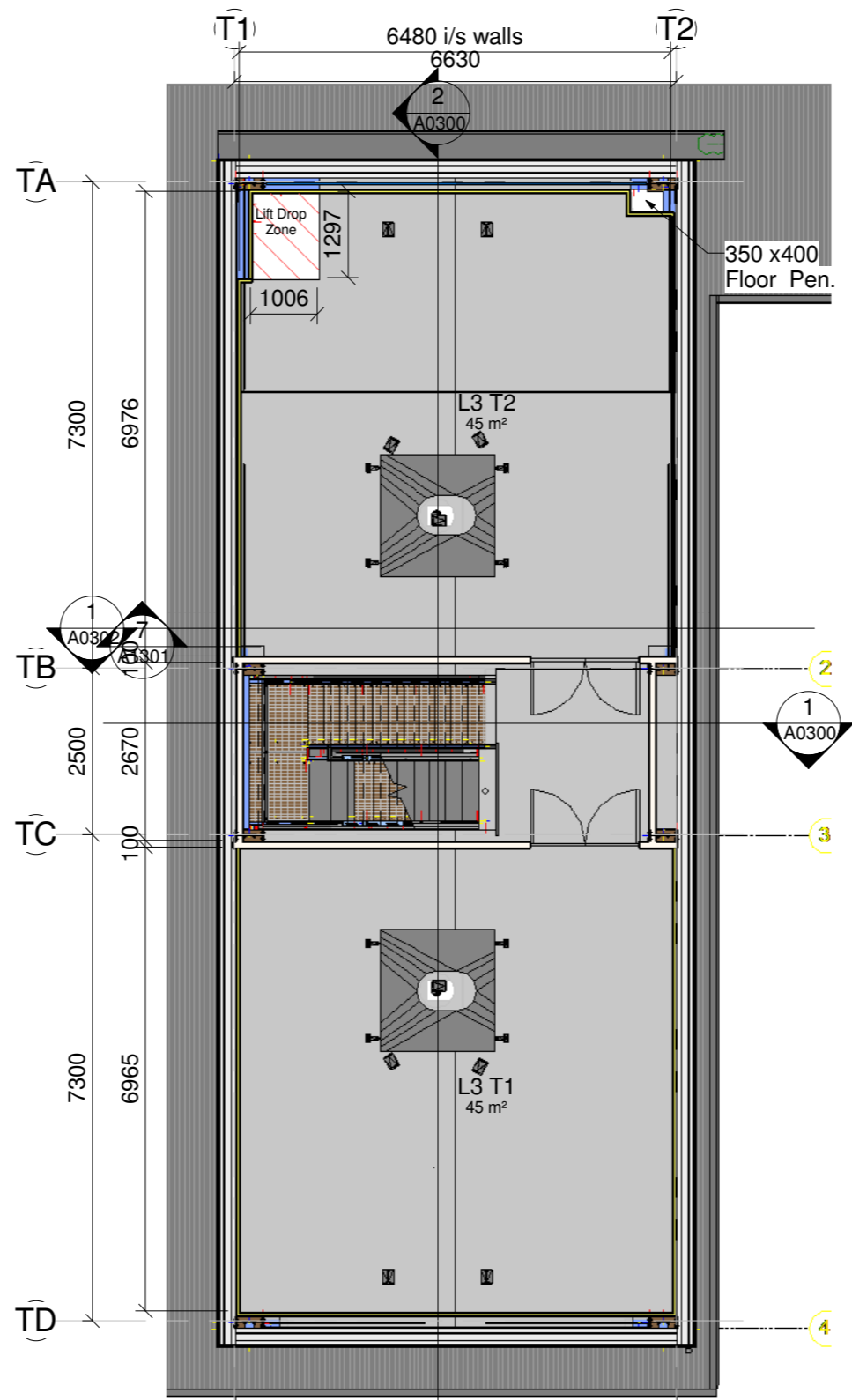
Fresh air Supply Rates from NZS 4303 Table 1				
Application	Estimated Maximum** Occupancy P/1000 ft ² or 100 m ²	Outdoor Air Requirements		
		cfm/person	L/s person	cfm/ft ² L/s m ²
Meat processing	10	15	8	
Locker rooms				0.50 2.50

Notes:
 *1: Air supply transferred from tower air supply (higher pressure room)
 *2: Known Occupancy

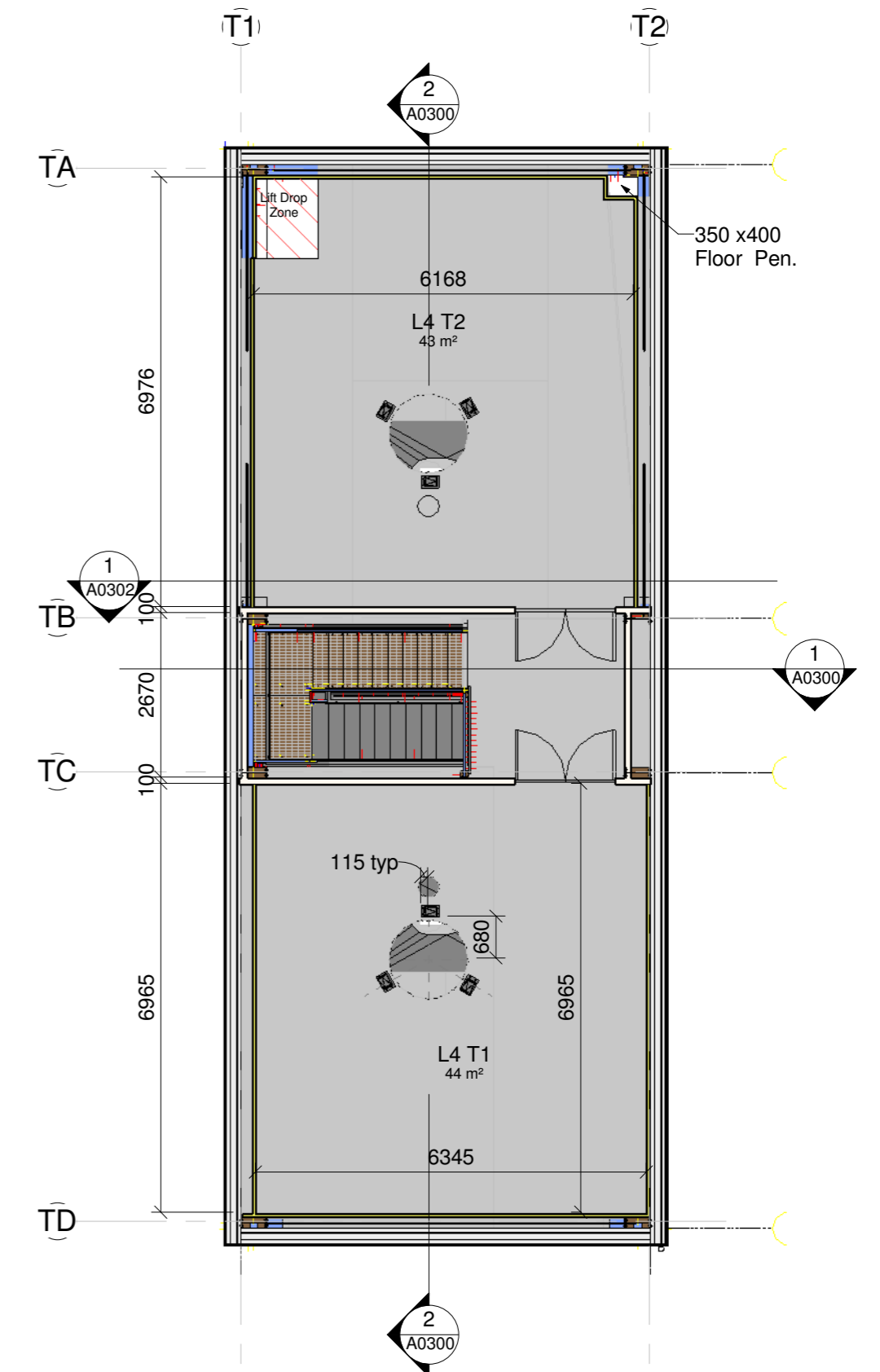
2 Ventilation
1:10



① Level T2
1 : 100



② Level T3
1 : 100



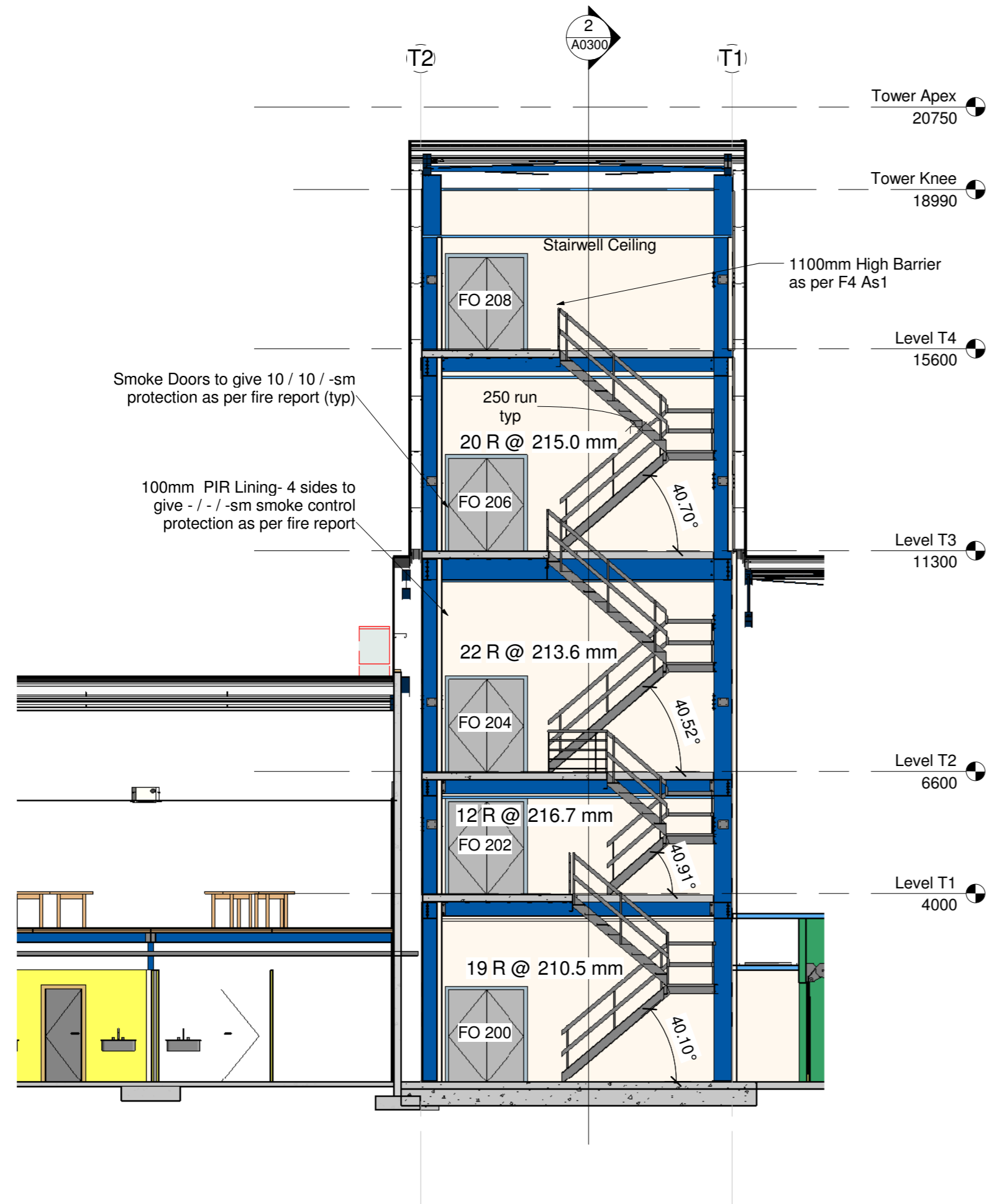
③ Level T4
1 : 100



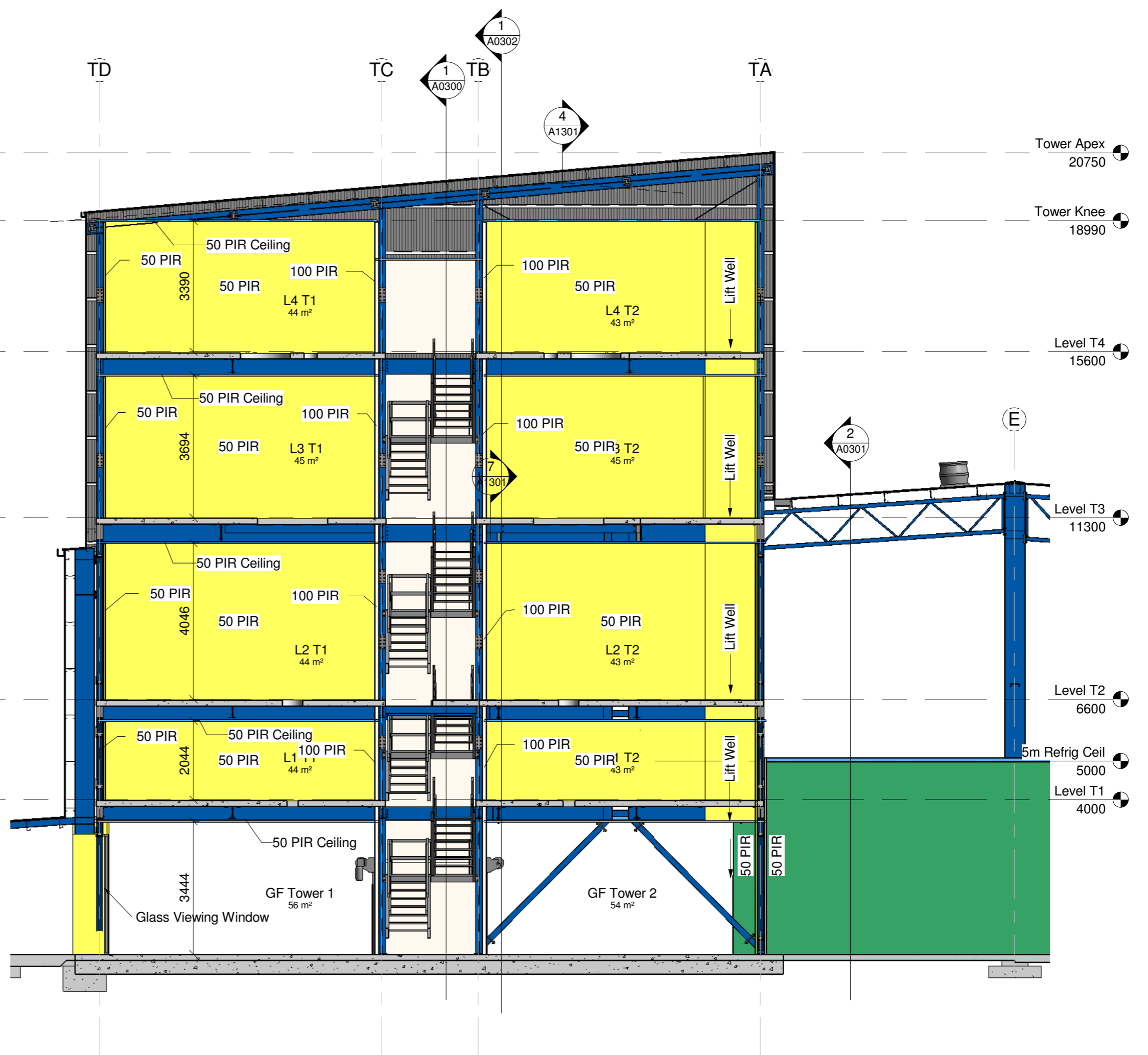
Thompson Engineering 2002 Ltd | PO Box 2081, Washdyke - Timaru | 9b Meadows Road - Timaru
PH 0800 688 716 | F (03) 688 7168 | www.thompsonengineering.co.nz | design@thompsonengineering.co.nz

PROJECT
NZ Dairy Collaborative Group
Tower Extension
 9 Ashford Ave, Ashburton
 All Drawings property of Thompson Engineering 2002 Ltd

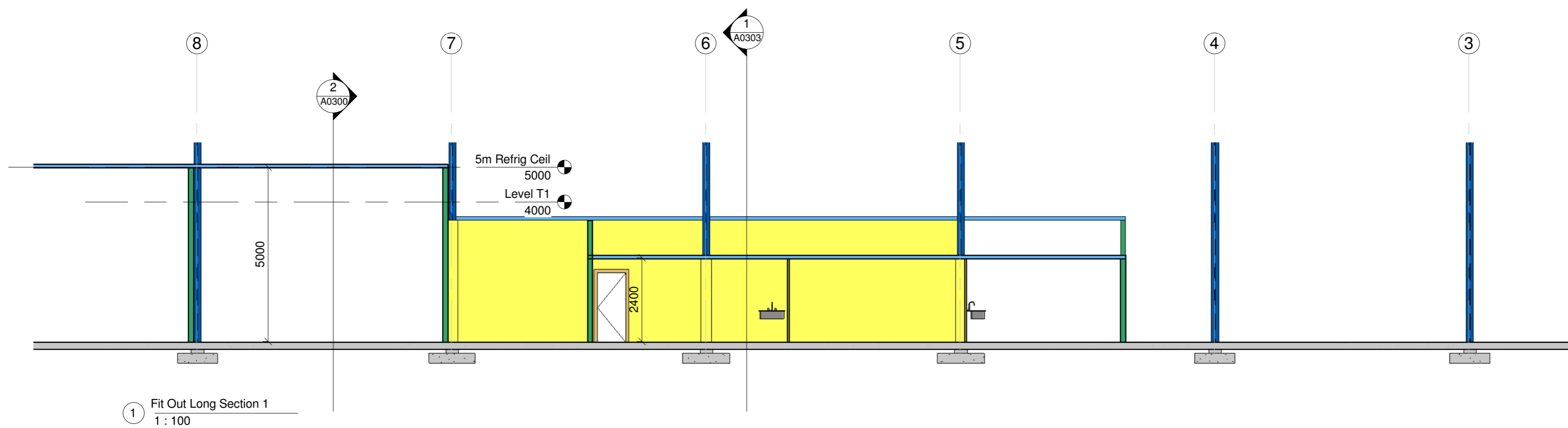
Rev#	Amendments	Date	SCALE	JOB #
			1 : 100 @ A2	12630
			DRAWN BY B Holloway	DATE 27/10/16
			CHECKED BY Checker	REV
			Level T2, T3, T4	A0203
Please note: All dimensions to be verified on site				Paper size: A2



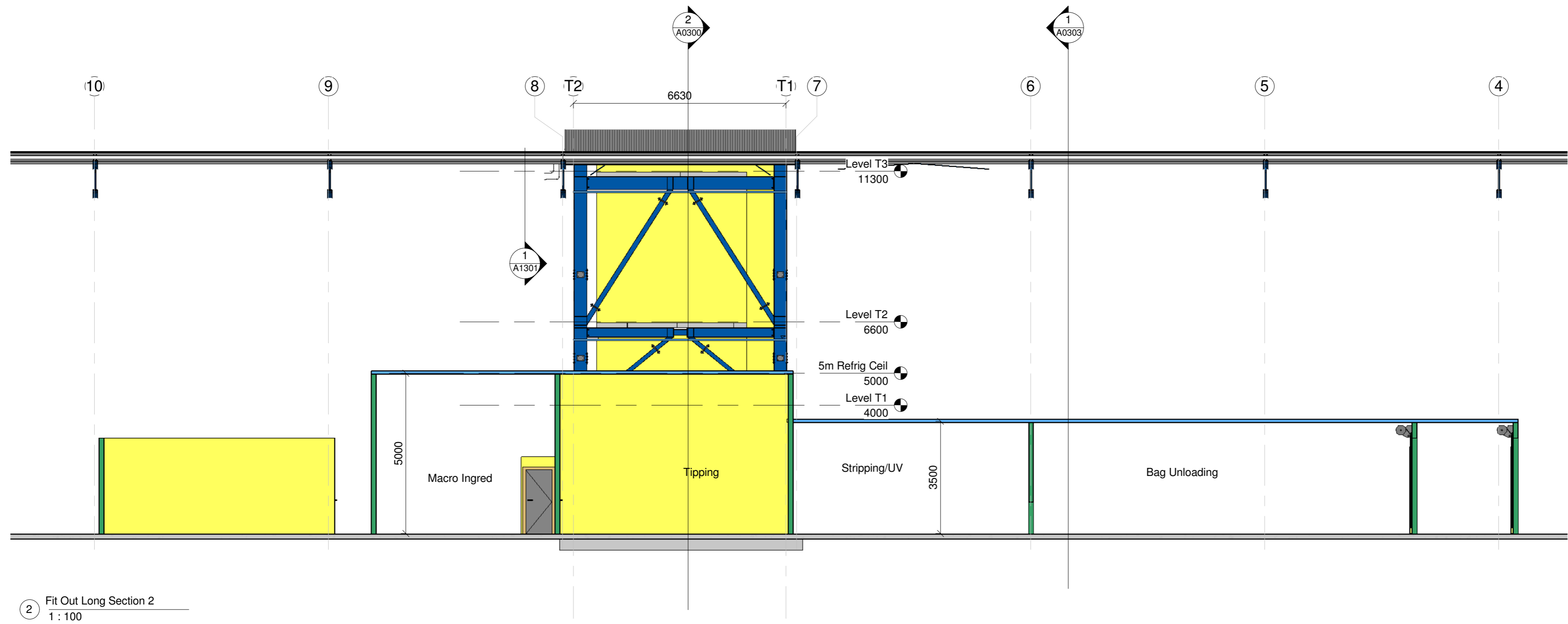
1 Tower Stair Detail
1 : 100



2 Tower Cross Section 2
1 : 100



1 Fit Out Long Section 1
1 : 100



2 Fit Out Long Section 2
1 : 100



PROJECT

NZ Dairy Collaborative Group
Tower Extension

9 Ashford Ave, Ashburton

Rev#

Amendments

Date

SCALE 1 : 100 @ A2

JOB # 12630

DRAWN BY B Holloway

DATE 27/10/16

CHECKED BY

REV

Cross Section BB

A0301

Please note: All dimensions to be verified on site

Paper size: A2



1 Fit Out Long Section 3
1 : 100



PROJECT

NZ Dairy Collaborative Group
Tower Extension

9 Ashford Ave, Ashburton

Rev#

Amendments

Date

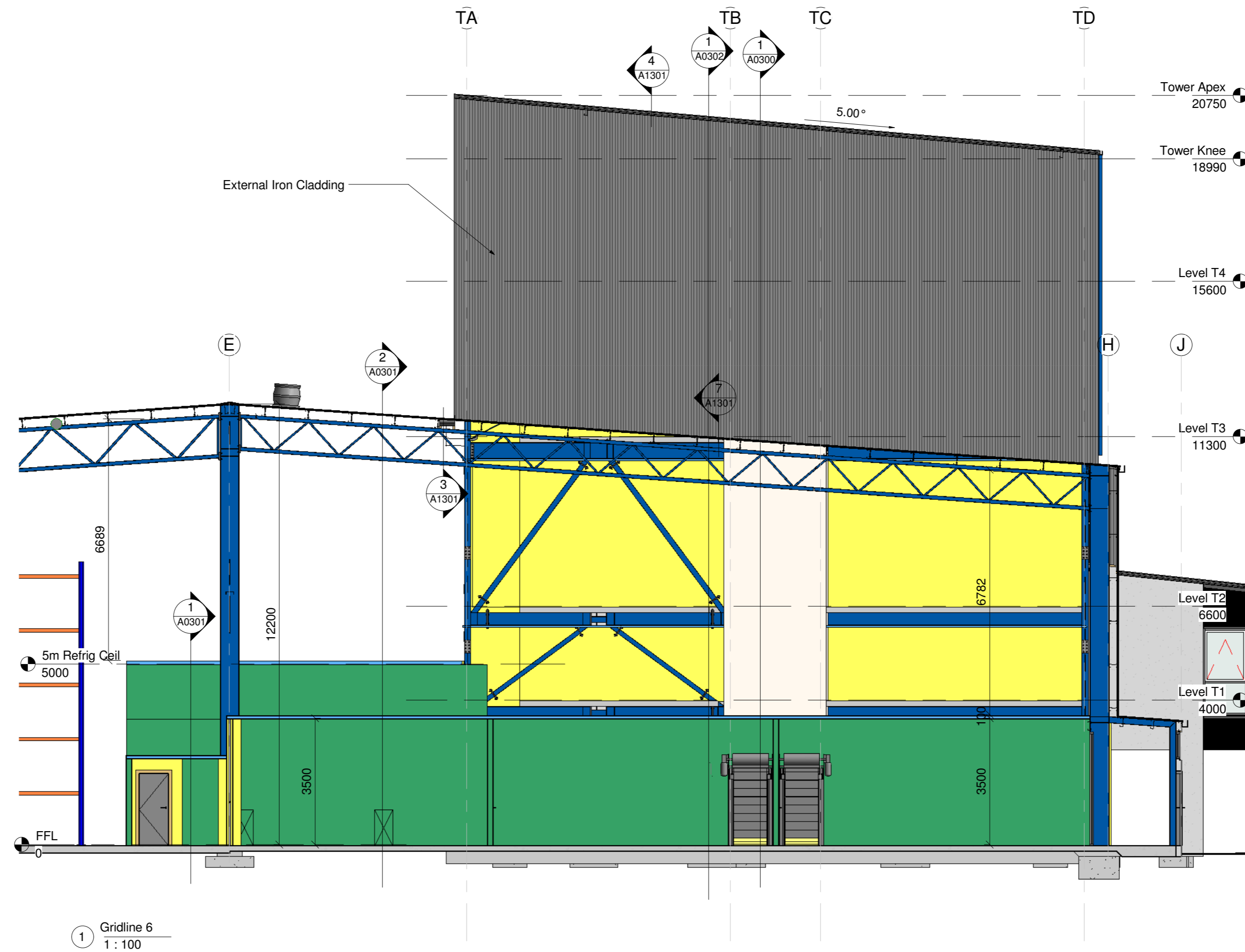
SCALE 1 : 100 @ A2 JOB # 12630

DRAWN BY B Holloway DATE 27/10/16

CHECKED BY REV

Cross Section CC A0302

Please note: All dimensions to be verified on site Paper size: A2



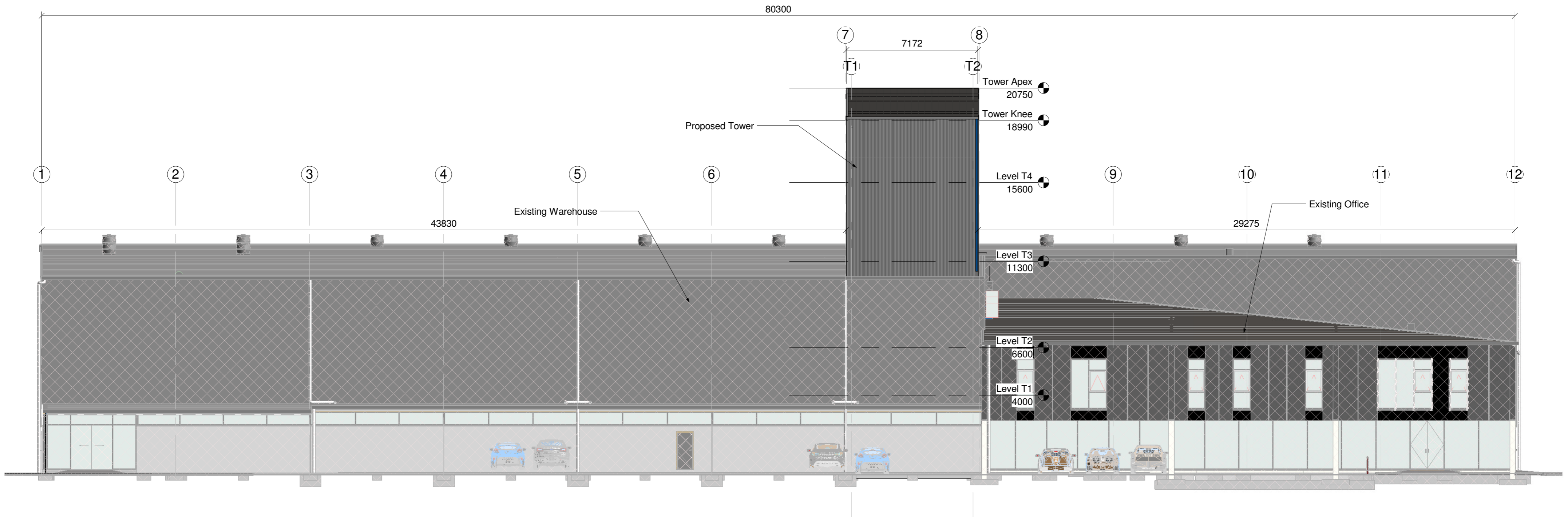
Thompson Engineering 2002 Ltd | PO Box 2081, Washdyke - Timaru | 9b Meadows Road - Timaru
 PH 0800 688 716 | F (03) 688 7168 | www.thompsonengineering.co.nz | design@thompsonengineering.co.nz

PROJECT
NZ Dairy Collaborative Group
Tower Extension
 9 Ashford Ave, Ashburton

Rev#	Amendments	Date

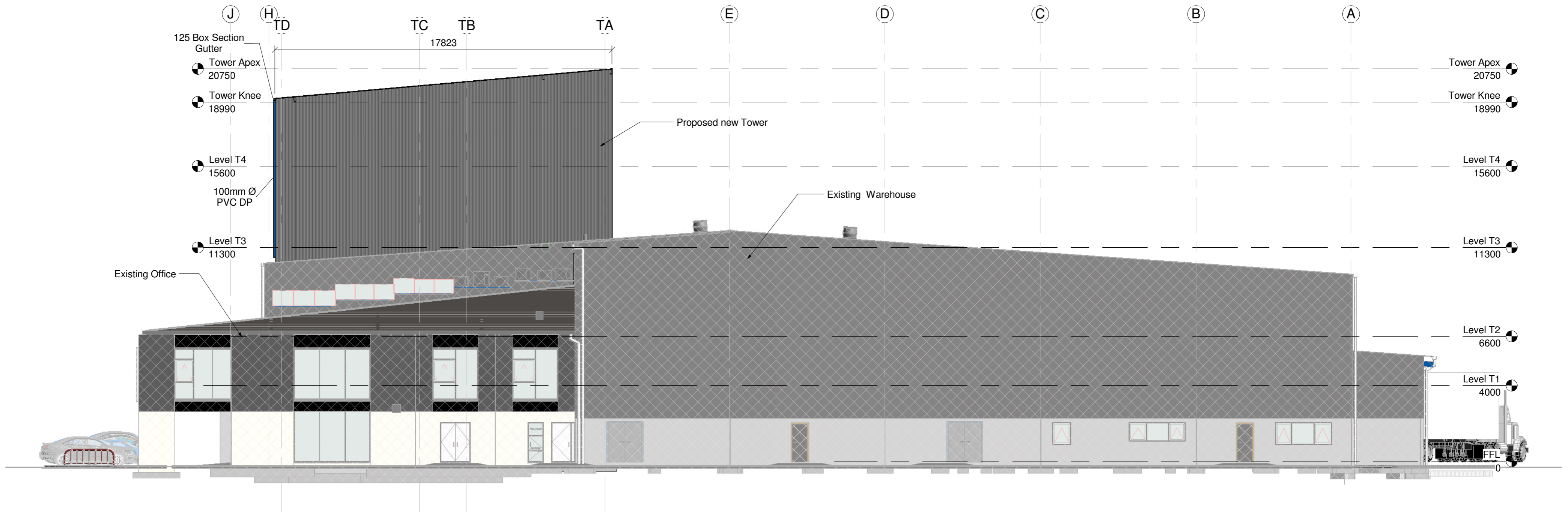
SCALE	1 : 100 @ A2	JOB #	12630
DRAWN BY	B Holloway	DATE	27/10/16
CHECKED BY	Checker	REV	
Cross Section GL6			A0303
Please note: All dimensions to be verified on site			
Paper size: A2			

All Drawings property of Thompson Engineering 2002 Ltd



① Elevation C
1 : 150

 <p>Thompson Engineering 2002 Ltd PO Box 2081, Washdyke - Timaru 9b Meadows Road - Timaru PH 0800 688 716 F (03) 688 7168 www.thompsonengineering.co.nz design@thompsonengineering.co.nz</p>	PROJECT	<p>NZ Dairy Collaborative Group Tower Extension 9 Ashford Ave, Ashburton</p> <p>All Drawings property of Thompson Engineering 2002 Ltd</p>	Rev#	Amendments	Date	SCALE 1 : 150 @ A2	JOB # 12630	
							DRAWN BY B Holloway	DATE 27/10/16
							CHECKED BY	REV
							Elevations C	
						Please note: All dimensions to be verified on site		Paper size: A2



1 Elevation B
1 : 150



PROJECT
**NZ Dairy Collaborative Group
 Tower Extension**
 9 Ashford Ave, Ashburton
 All Drawings property of Thompson Engineering 2002 Ltd

Rev#	Amendments	Date

SCALE 1 : 150 @ A2	JOB # 12630
DRAWN BY B Holloway	DATE 27/10/16
CHECKED BY	REV
Elevations B	A0401
Please note: All dimensions to be verified on site	
Paper size: A2	

Thompson Engineering 2002 Ltd | PO Box 2081, Washdyke - Timaru | 9b Meadows Road - Timaru
 PH 0800 688 716 | F (03) 688 7168 | www.thompsonengineering.co.nz | design@thompsonengineering.co.nz



PLUMBING LEGEND		
FIXTURE	PIPE SIZE	GRADIENT
WC	100Ø	1:60
Vanities	65Ø	1:40
Wash Trough	40Ø	1:40
Shower	40Ø	1:40
Sink	65Ø	1:40
Urinal	50Ø	1:20
Foul Drain	100Ø	1:60
Stormwater	as per plan as per plan	

- - - - - sewer
 - - - - - water
 - - - - - stormwater

All fixtures to be back vented or to approval of inspector on-site

Internal plumbing to ASNZ 3500.2.2003

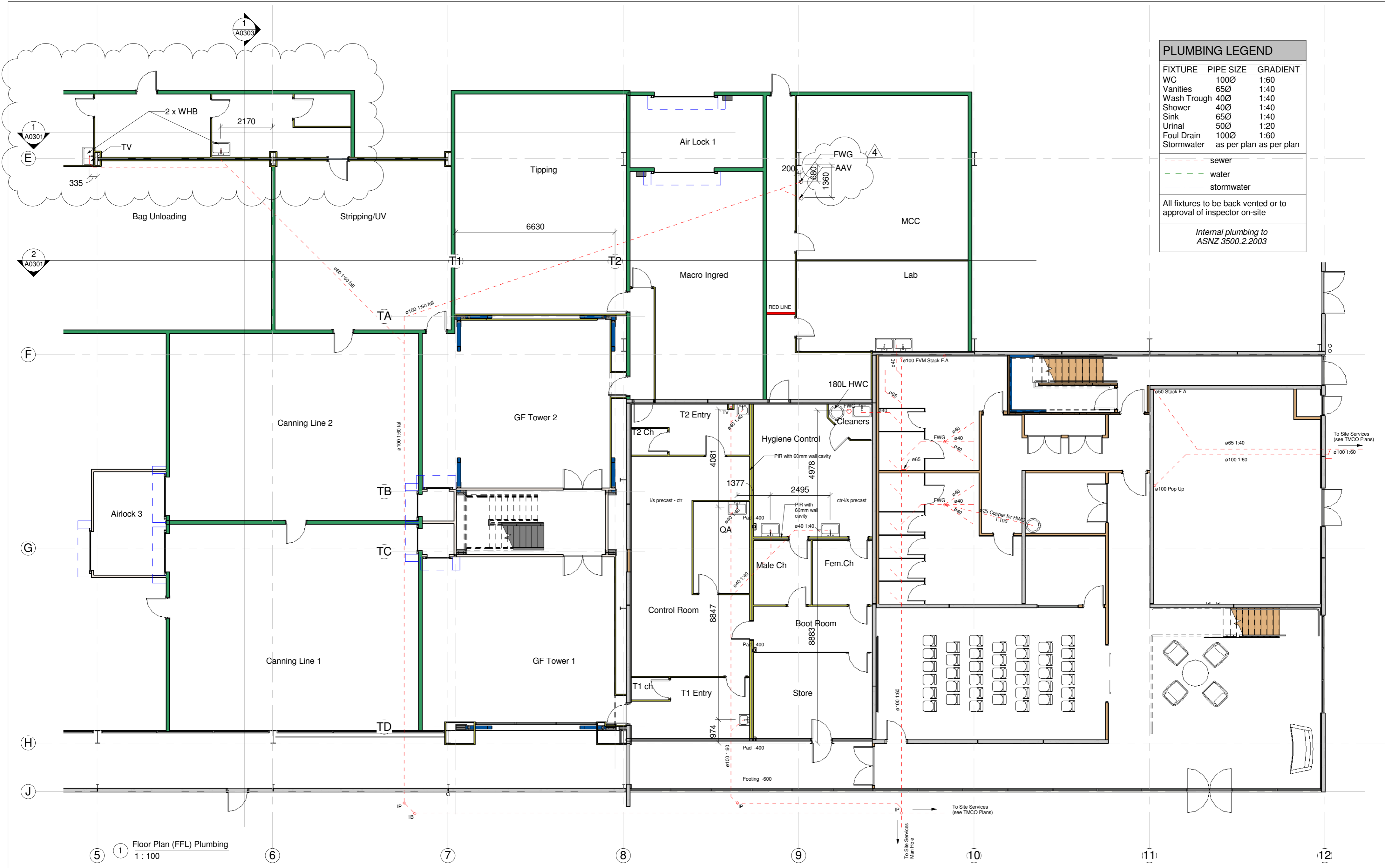
1 Floor Plan (FFL) Plumbing
1:100



PROJECT
**NZ Dairy Collaborative Group
 Tower Extension**
 9 Ashford Ave, Ashburton
 All Drawings property of Thompson Engineering 2002 Ltd

Rev#	Amendments
3	MCC Waste

Date	SCALE	JOB #
12/12/16	1:100 @ A2	12630
	DRAWN BY	DATE
	B Holloway	27/10/16
	CHECKED BY	REV
		3
Plumbing Ground Floor		A0500
Please note: All dimensions to be verified on site		Paper size: A2



PLUMBING LEGEND		
FIXTURE	PIPE SIZE	GRADIENT
WC	100Ø	1:60
Vanities	65Ø	1:40
Wash Trough	40Ø	1:40
Shower	40Ø	1:40
Sink	65Ø	1:40
Urinal	50Ø	1:20
Foul Drain	100Ø	1:60
Stormwater	as per plan as per plan	

- - - sewer
 - - - water
 - - - stormwater

All fixtures to be back vented or to approval of inspector on-site

Internal plumbing to ASNZ 3500.2.2003

1 Floor Plan (FFL) Plumbing
1:100



PROJECT

**NZ Dairy Collaborative Group
Tower Extension**

9 Ashford Ave, Ashburton

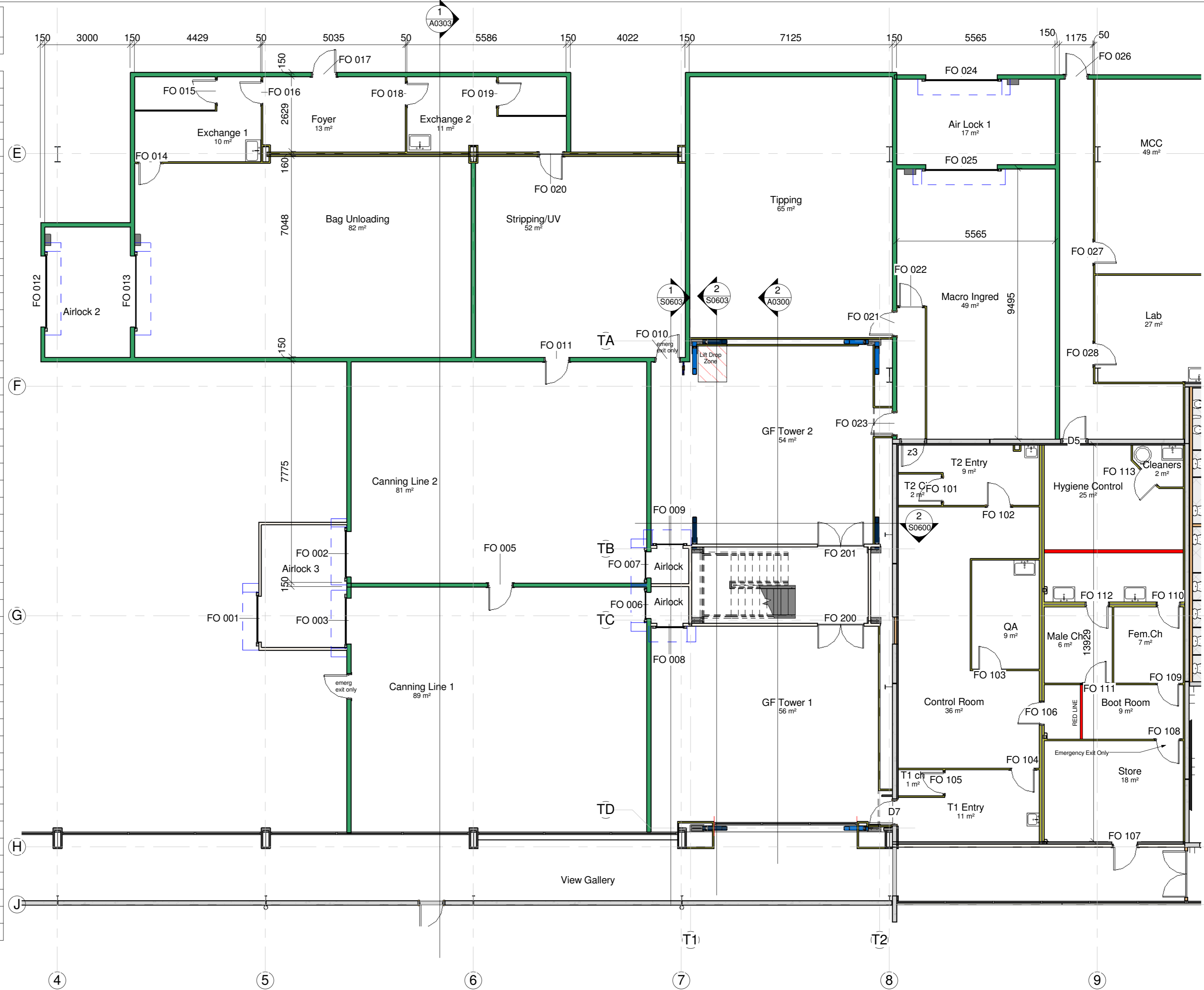
All Drawings property of Thompson Engineering 2002 Ltd

Rev#	Amendments
4	Plumbing Mods

Date	SCALE	JOB #
20/12/16	1:100 @ A2	12630
	DRAWN BY	DATE
	B Holloway	27/10/16
	CHECKED BY	REV
		4
Plumbing Ground Floor		A0500
Please note: All dimensions to be verified on site		Paper size: A2

Door Schedule

Mark	Type	Type Comments	Level
FO 001	AlbanyRR300 2.1hx1.6w		FFL
FO 002	AlbanyRR300 2.1hx1.6w		FFL
FO 003	AlbanyRR300 2.1hx1.6w		FFL
FO 004	810 leaf internal door		FFL
FO 005	810 leaf internal door		FFL
FO 006	Airlock 1200w x 900 w	TBC by client	FFL
FO 007	Airlock 1200w x 900 w	TBC by client	FFL
FO 008	Airlock 1200w x 900 w	TBC by client	FFL
FO 009	Airlock 1200w x 900 w	TBC by client	FFL
FO 010	810 leaf internal door		FFL
FO 011	810 leaf internal door		FFL
FO 012	Envico Micro 3.0hx2.5w(1p)		FFL
FO 013	Envico Micro 3.0hx2.5w(1p)		FFL
FO 014	760 leaf internal door		FFL
FO 015	810 leaf internal door		FFL
FO 016	760 leaf internal door		FFL
FO 017	810 leaf internal door		FFL
FO 018	760 leaf internal door		FFL
FO 019	810 leaf internal door		FFL
FO 020	810 leaf internal door		FFL
FO 021	810 leaf internal door		FFL
FO 022	810 leaf internal door		FFL
FO 023	760 leaf internal door		FFL
FO 024	Envico Maxim 4.5hx2.5w		FFL
FO 025	Envico Maxim 4.5hx2.5w		FFL
FO 026	760 leaf internal door		FFL
FO 027	760 leaf internal door		FFL
FO 028	760 leaf internal door		FFL
FO 101	810 leaf internal door		FFL
FO 102	810 leaf internal door		FFL
FO 103	810 leaf internal door		FFL
FO 104	810 leaf internal door		FFL
FO 105	760 leaf internal door		FFL
FO 106	760 leaf internal door		FFL
FO 107	810 leaf internal door		FFL
FO 108	810 leaf internal door		FFL
FO 109	760 leaf internal door		FFL
FO 110	760 leaf internal door		FFL
FO 111	760 leaf internal door		FFL
FO 112	760 leaf internal door		FFL
FO 113	760 leaf internal door		FFL
FO 200	810 x 810 Double Leaf Door	FRR 10/10/-Sm	FFL
FO 201	810 x 810 Double Leaf Door	FRR 10/10/-Sm	FFL
FO 202	810 x 810 Double Leaf Door	FRR 10/10/-Sm	Level T1
FO 203	810 x 810 Double Leaf Door	FRR 10/10/-Sm	Level T1
FO 204	810 x 810 Double Leaf Door	FRR 10/10/-Sm	Level T2
FO 205	810 x 810 Double Leaf Door	FRR 10/10/-Sm	Level T2
FO 206	810 x 810 Double Leaf Door	FRR 10/10/-Sm	Level T3
FO 207	810 x 810 Double Leaf Door	FRR 10/10/-Sm	Level T3
FO 208	810 x 810 Double Leaf Door	FRR 10/10/-Sm	Level T4
FO 209	810 x 810 Double Leaf Door	FRR 10/10/-Sm	Level T4



1 Door and Window Plan GF
1 : 100

NOTE: Refer to Sheet A0202 and A0203 for doors on Levels T1 -T4

PROJECT

NZ Dairy Collaborative Group
Tower Extension

9 Ashford Ave, Ashburton

All Drawings property of Thompson Engineering 2002 Ltd

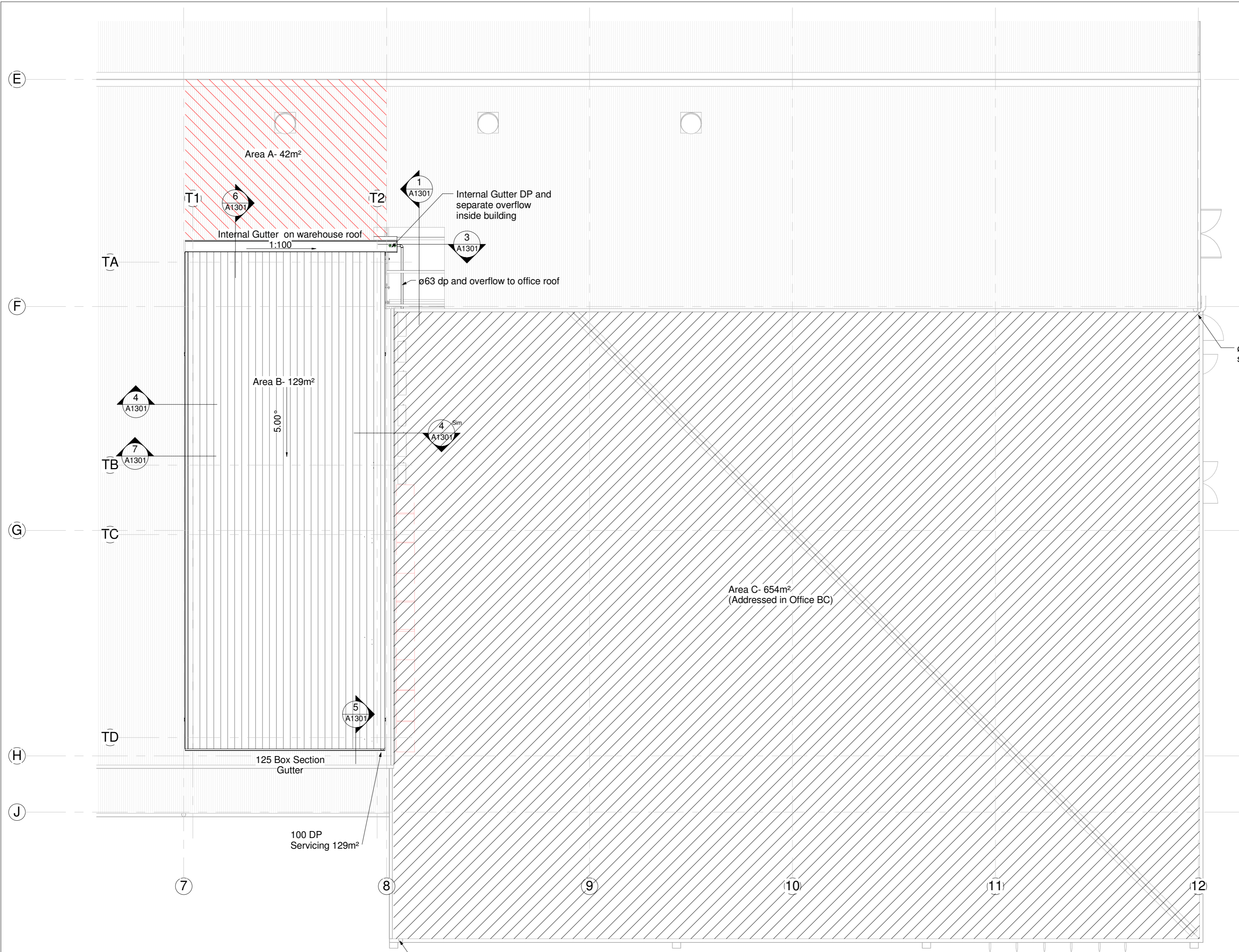
Rev#	Amendments	Date	SCALE	JOB #
			1 : 100 @ A2	12630
			DRAWN BY B.Holloway	DATE 27/10/16
			CHECKED BY	REV
			D W Ground Floor Plan	A0600
			Please note: All dimensions to be verified on site	
			Paper size: A2	

DOWNSPIPE SCHEDULE

Downpipe size (mm) for 0-25° pitch roof for given roof area	
Minimum internal Pipe Size	Plan area of roof served by the downpipe (m²)
63mm Ø	60
74mm Ø	85
100mm Ø	155
150mm Ø	350

SURFACE AREA CATCHMENTS

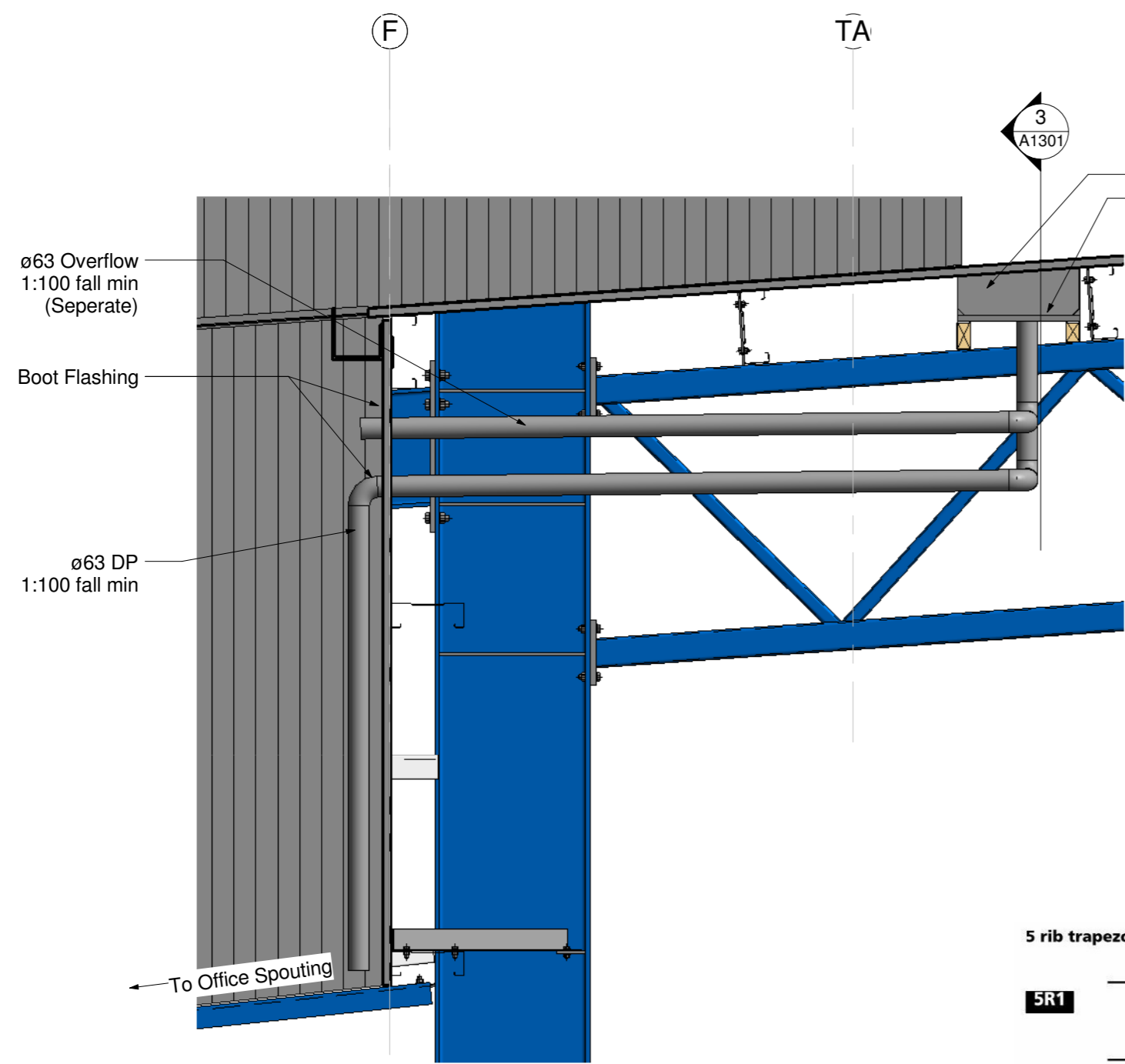
area 1 = 42m² - 1 x 63 Ø DP min
 area 2 = 129m² - 1 x 100 Ø DP min
 area 3 = 696m² - 2 x 150 Ø DP (existing in office BC)



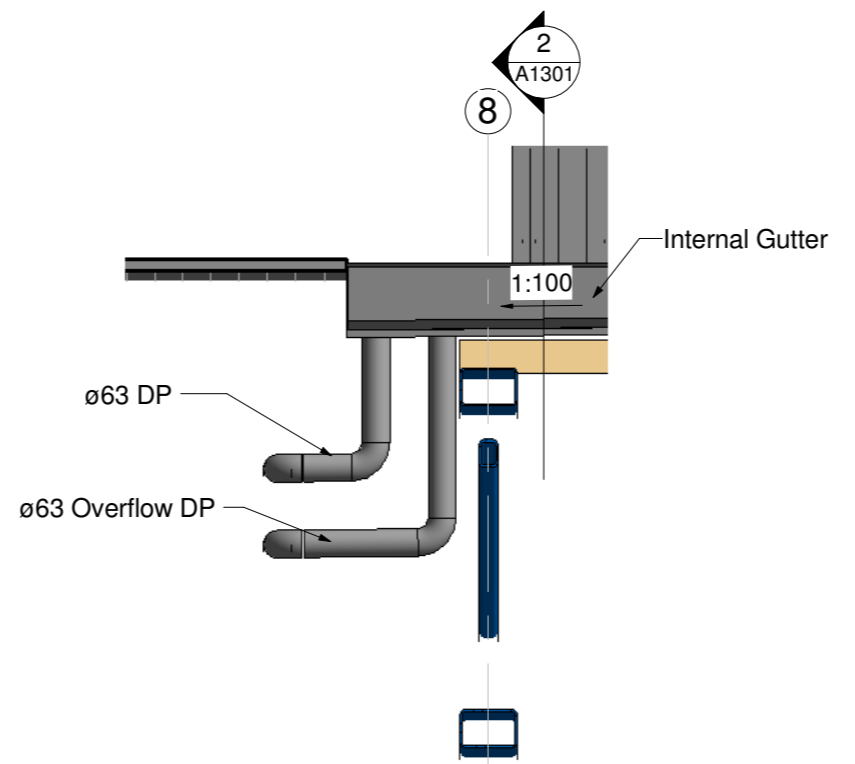
1 Tower Roof Plan
1 : 100

ø150 DP as part of existing office servicing 304m² of office roof and 42m² from Warehouse Internal Gutter (behind tower)
Total Area Serviced = 346m²

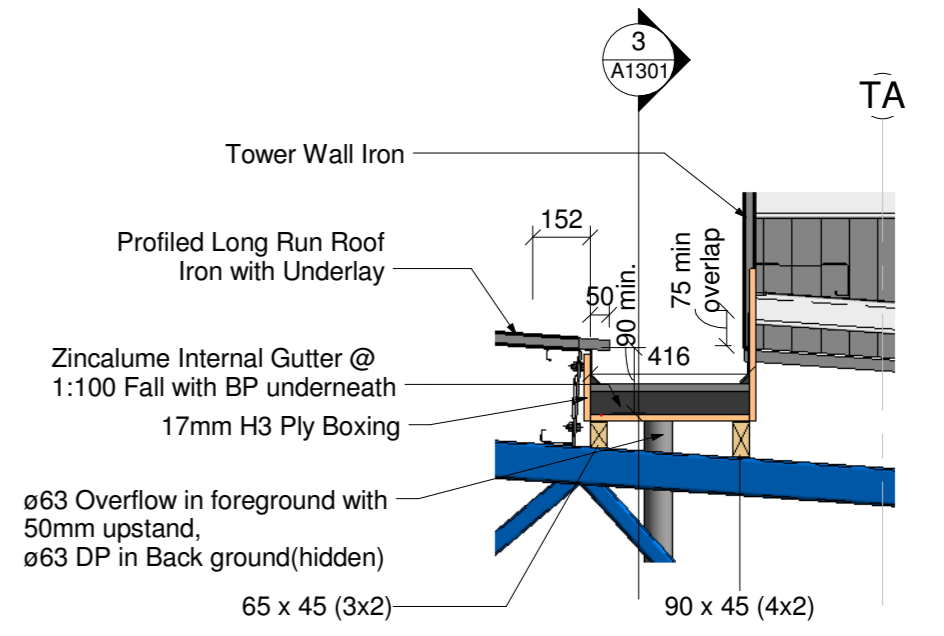
ø150 DP as part of existing office servicing 350m² of office roof



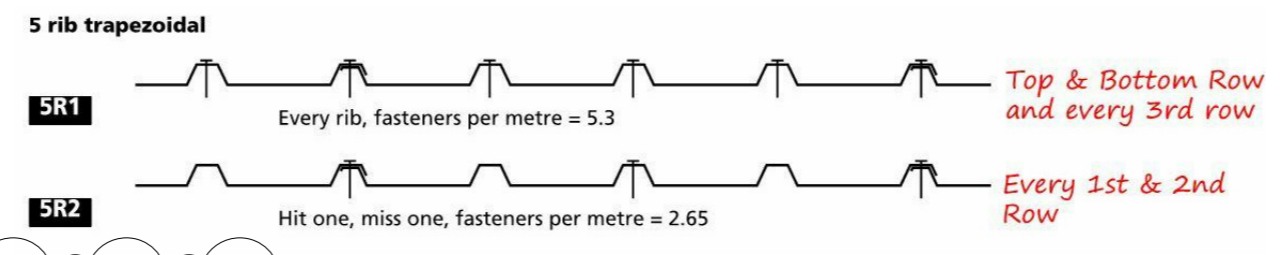
1 Internal Gutter side
1 : 20



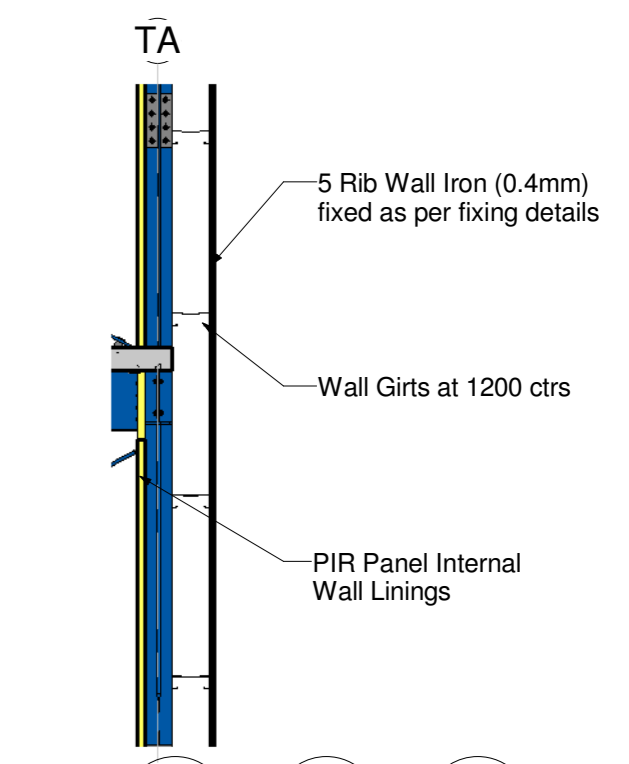
3 Internal Gutter DP Detail
1 : 20



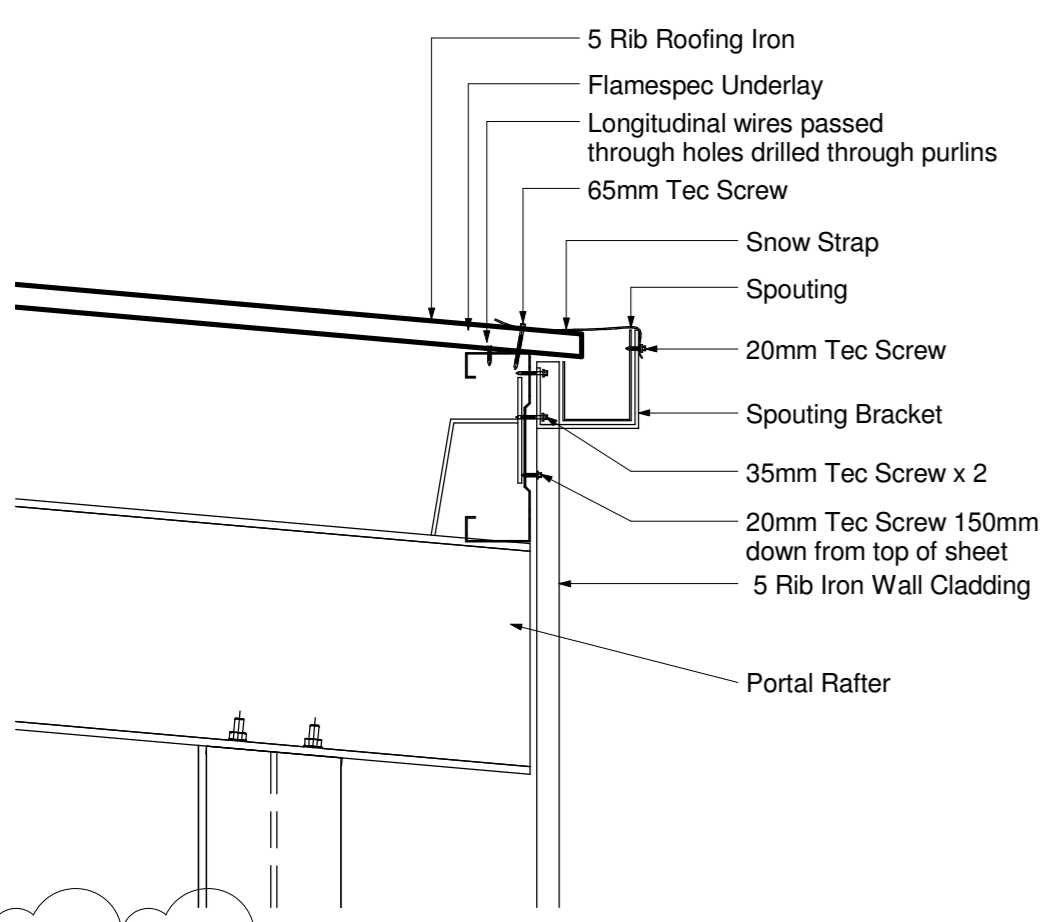
2 Internal Gutter Cross Section
1 : 20



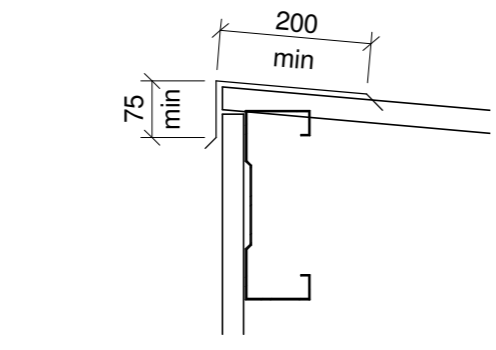
9 Fixing Pattern
1 : 25



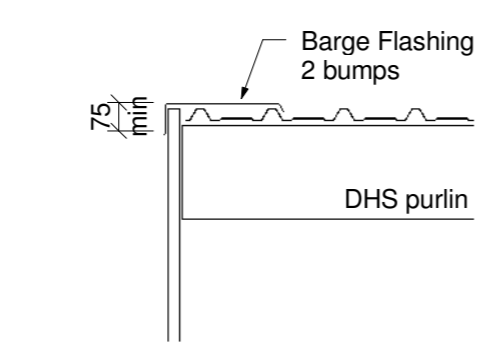
10 Cladding Cross section
1 : 50



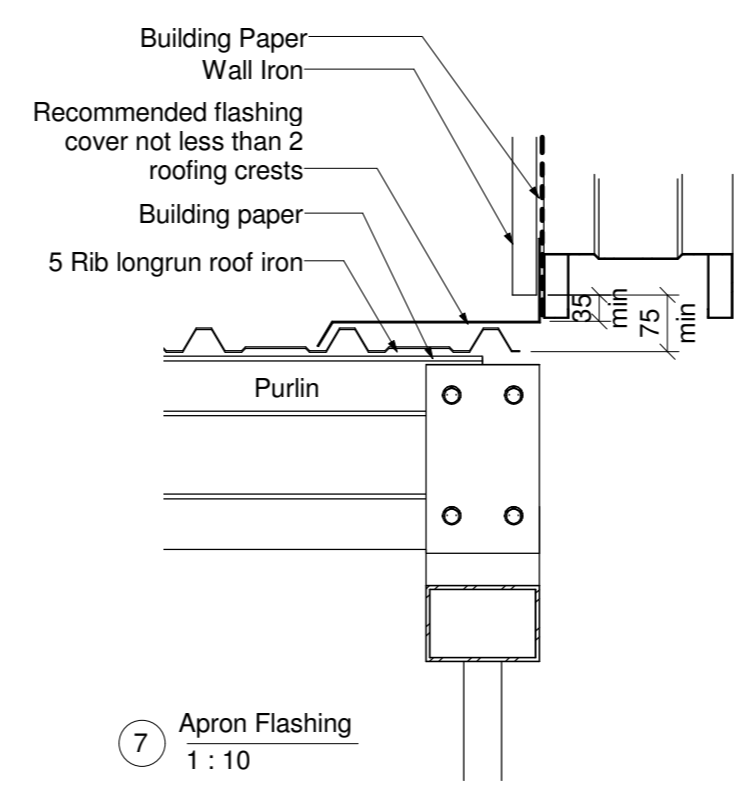
5 Spouting detail
1 : 10



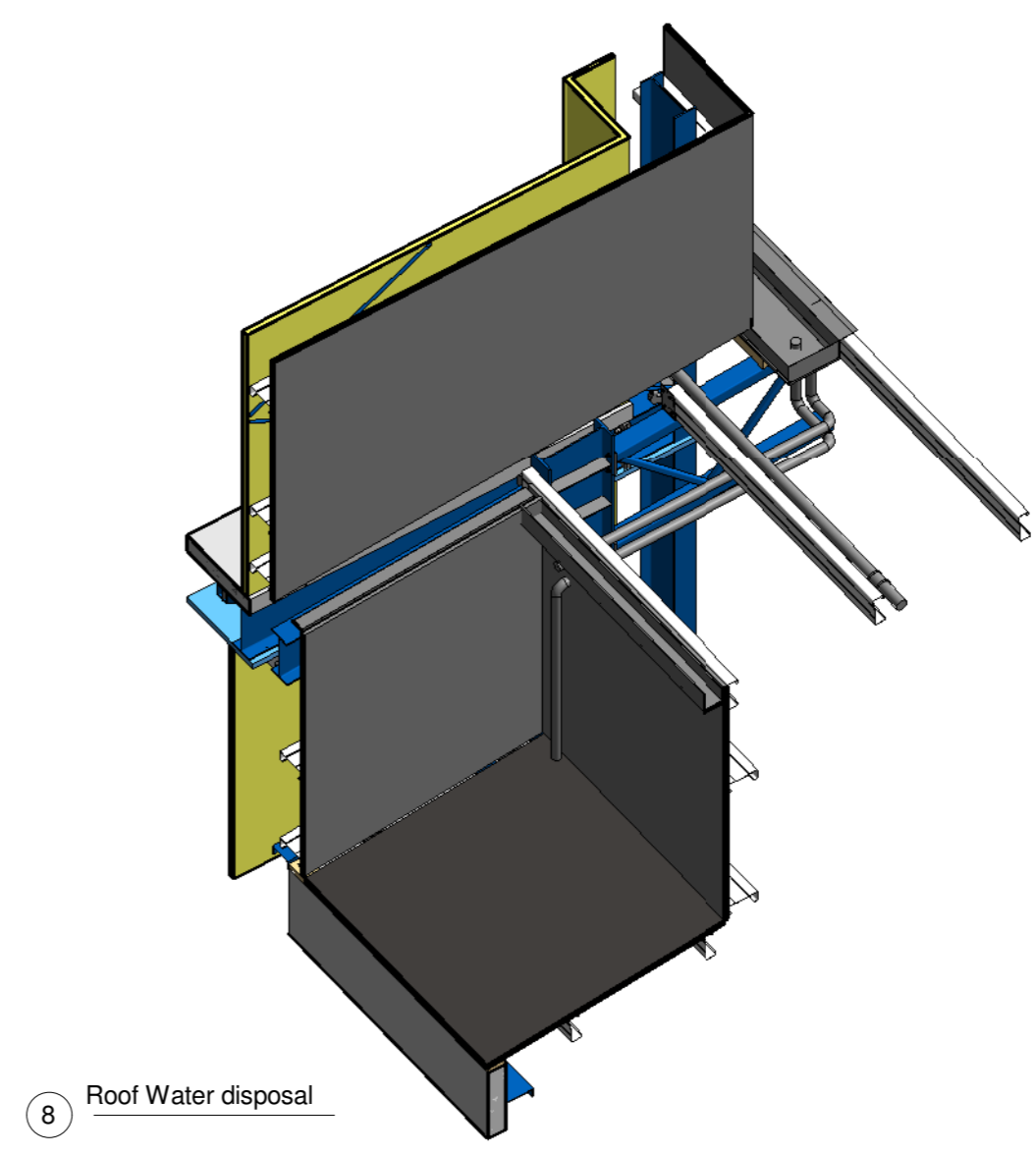
6 Barge Flashing Top
1 : 10



4 Barge Flashing Detail
1 : 20

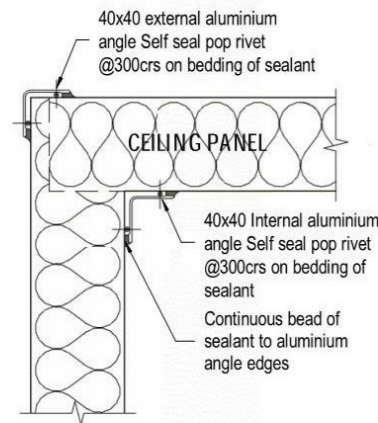


7 Apron Flashing
1 : 10

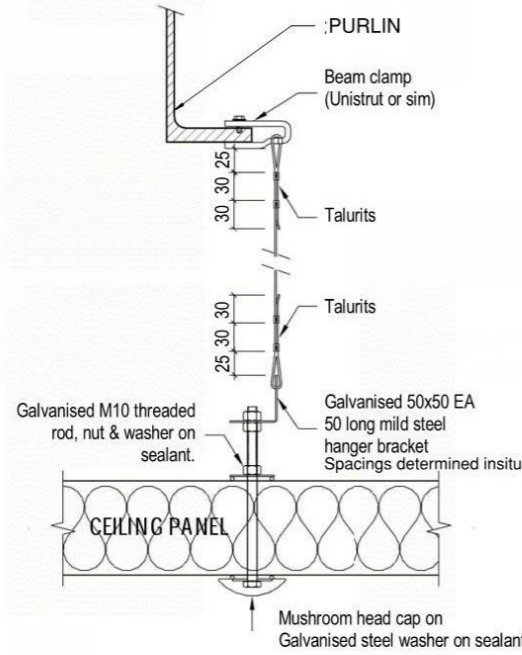


8 Roof Water disposal

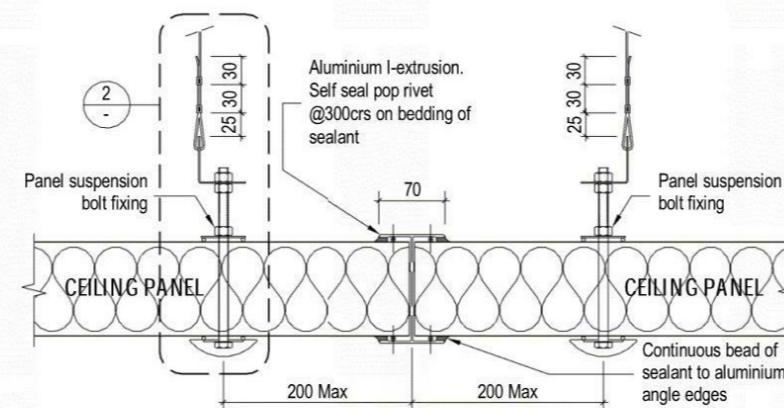
TYPICAL CONNECTION DETAILS FOR INSULATED PANEL FIT OUT



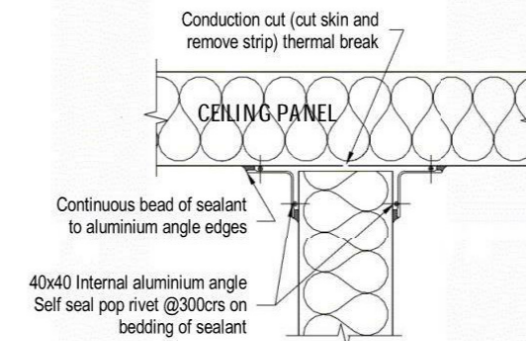
1 Section Detail
1:5



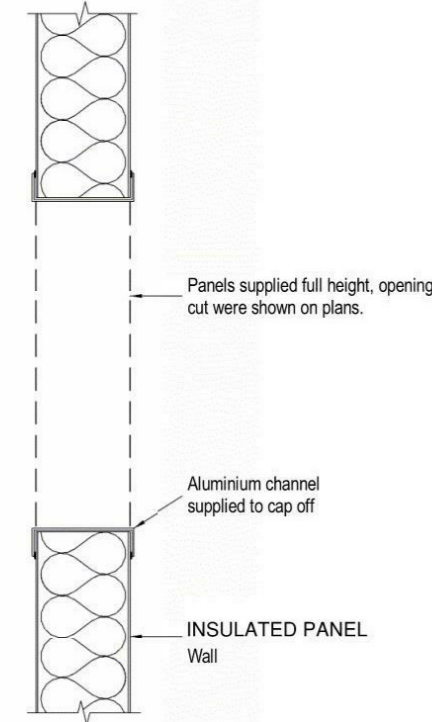
2 CEILING FIXING
1:5



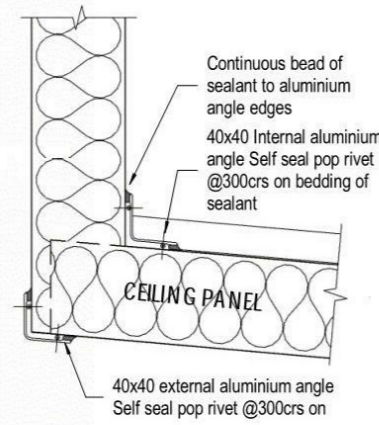
3 Ceiling Panel End to End Detail
1:5



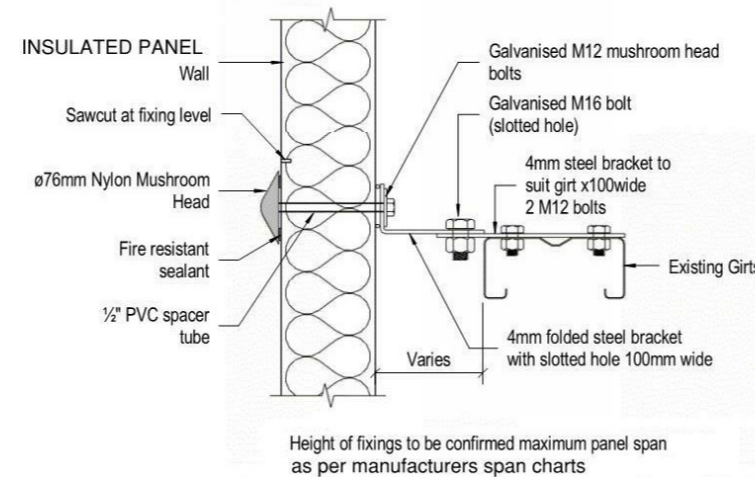
4 Section Detail
1:5



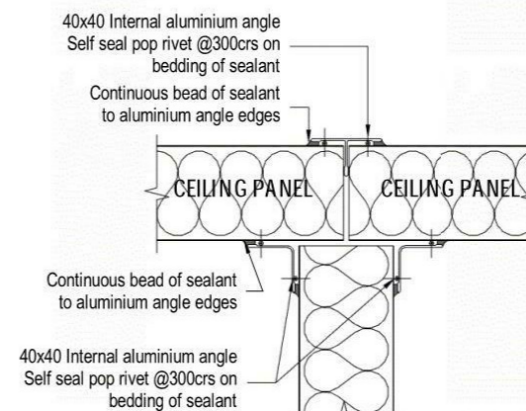
5 Typical Opening Cut Detail
1:5



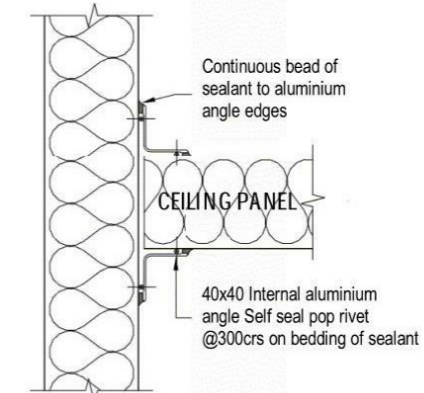
6 Section Detail
1:5



11 Section Detail
1:5

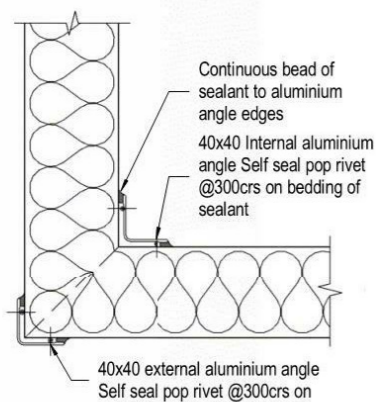


7 Section Detail
1:5

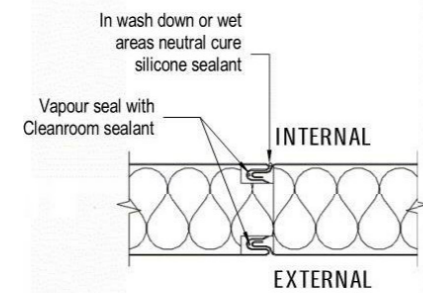


12 Section Detail
1:5

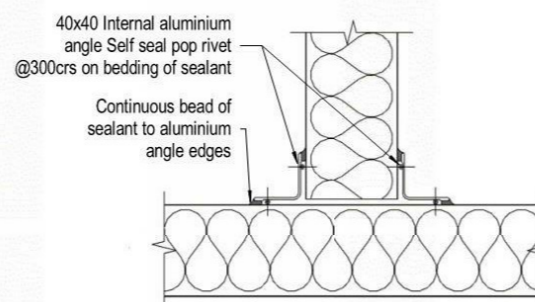
Note:
 • All aluminium to be anodised to 20 microns.
 • All other flashings to be 0.55 folded Colorsteel



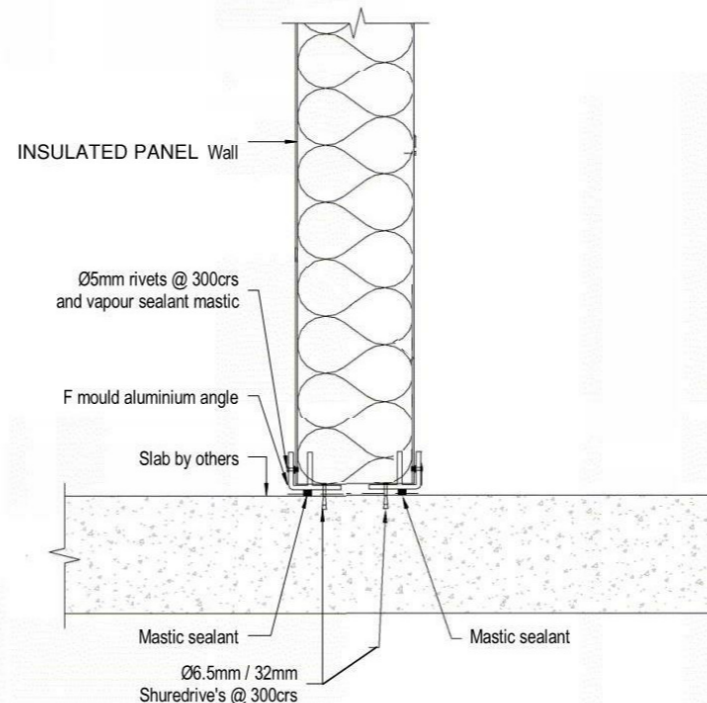
8 Plan Detail
1:5



9 Typical Panel Connection Detail
1:5



10 Plan Detail
1:5



13 Wall / Floor Detail
1:5

Note: Coving in corners may be installed at the discretion of the installer and MPI consultant.

4/05/2015 3:52:33 p.m.



Thompson Engineering 2002 Ltd | PO Box 2081, Washdyke - Timaru | 9b Meadows Road - Timaru
 PH 0800 688 716 | F (03) 688 7168 | www.thompsonengineering.co.nz | design@thompsonengineering.co.nz

PROJECT

NZ Dairy Collaborative Group
 Tower Extension

9 Ashford Ave, Ashburton

All Drawings property of Thompson Engineering 2002 Ltd

Rev#	Amendments	Date	SCALE	JOB #
			1 : 200 @ A2	12630
			DRAWN BY B Holloway	DATE 27/10/16
			CHECKED BY Checker	REV
			Refrig Panel Details	A1302
			Please note: All dimensions to be verified on site	
			Paper size: A2	